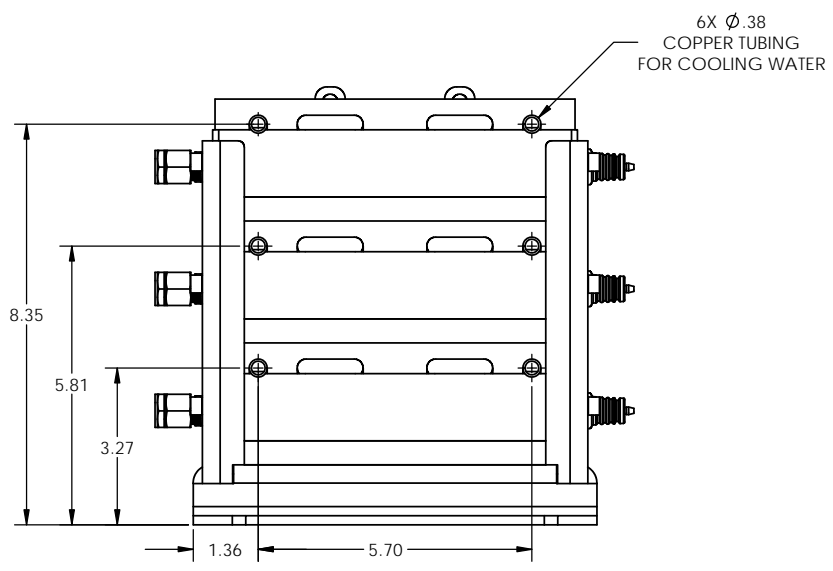
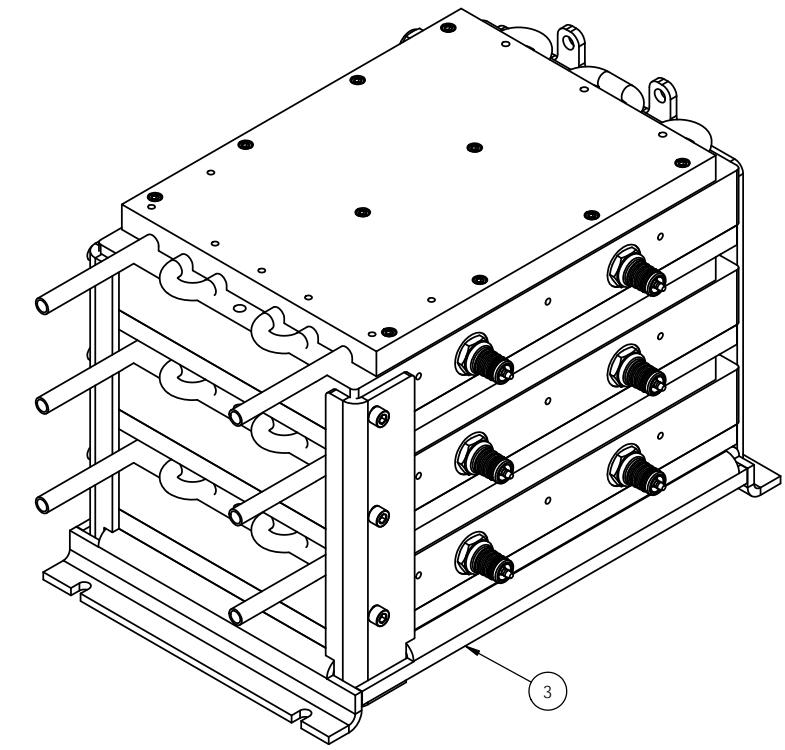
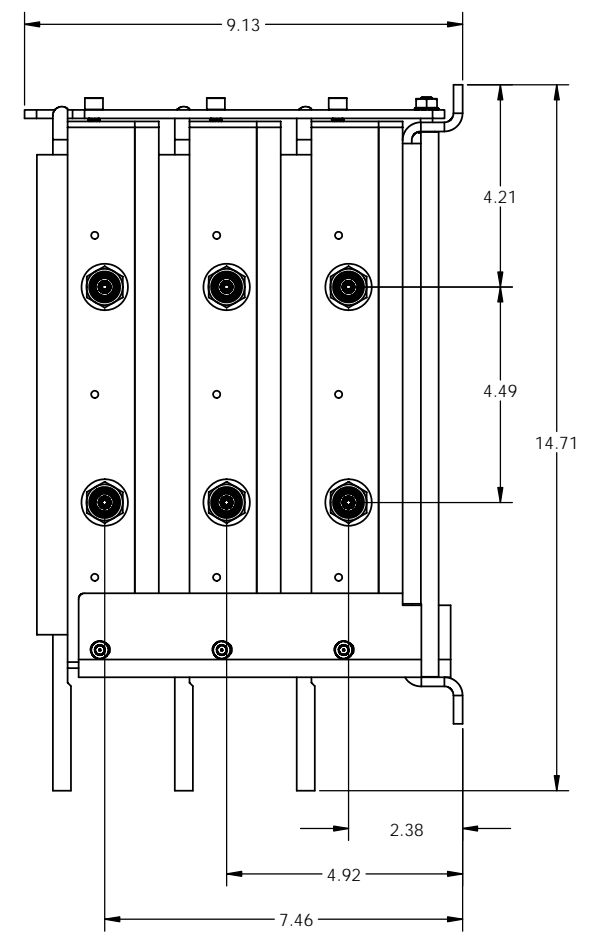
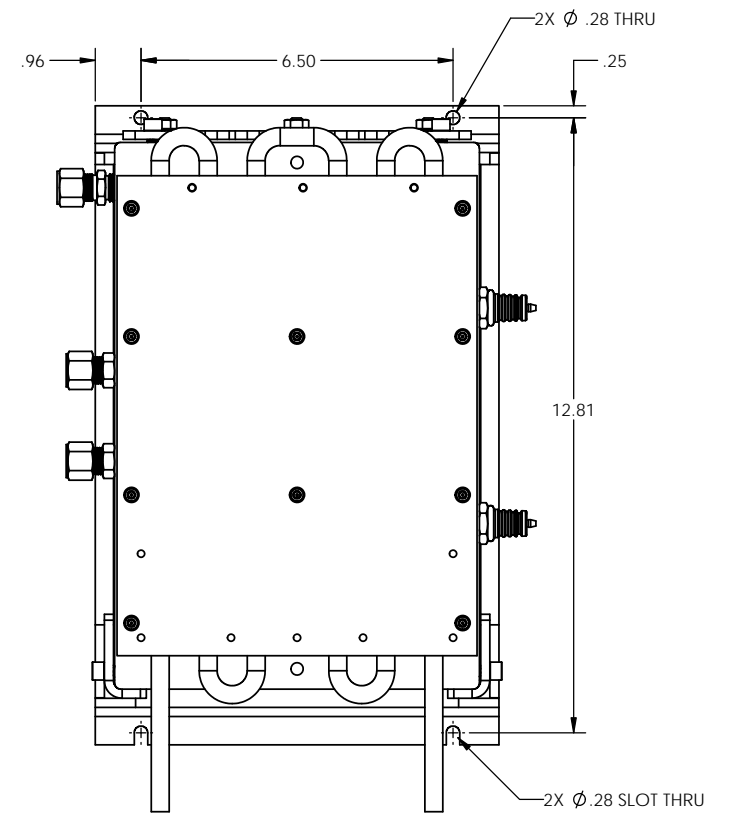
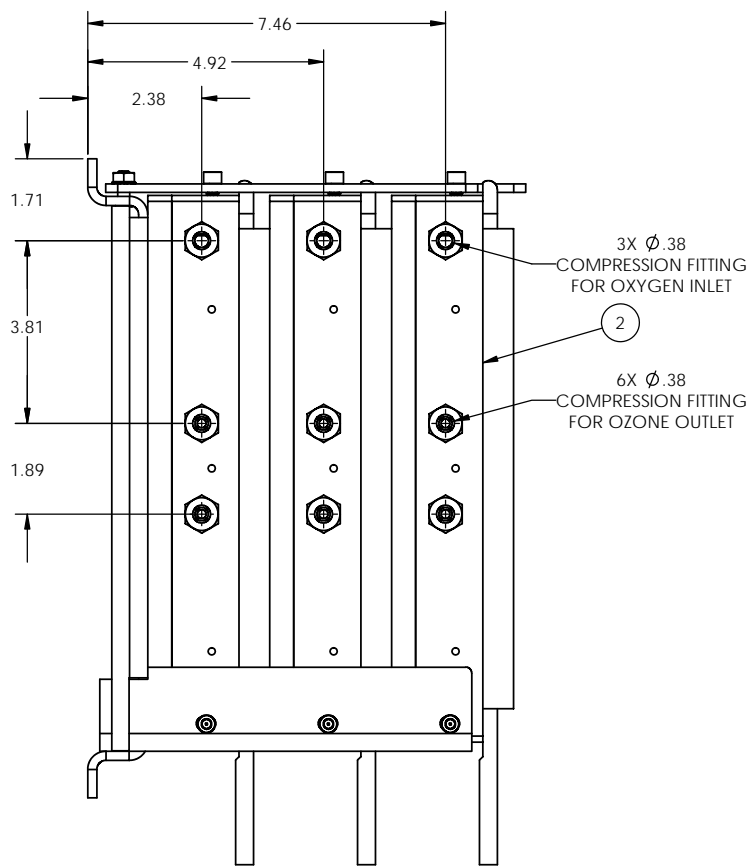
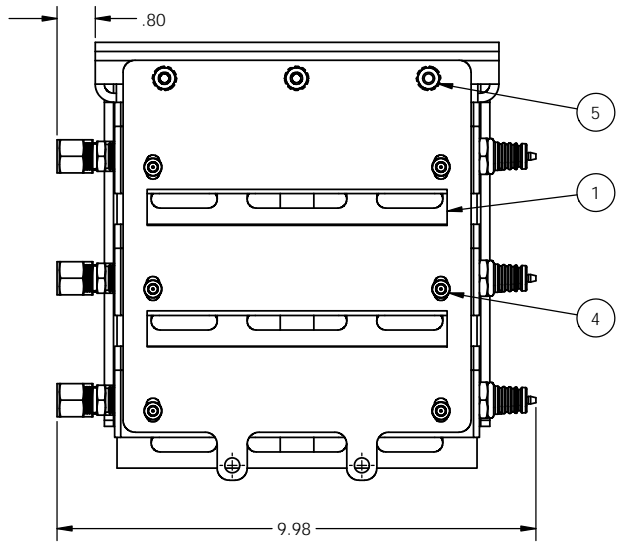


ITEM NO.	PART NUMBER	DESCRIPTION	MATERIAL	VENDOR	QTY.
1	27250	3 Up Upper Mounting Plate	7ga HRPO Steel		1
2	78040	Dual Plasma Block 3 Up Assembly	Various		3
3	79102	3 Up Base Weldment	6061 Aluminum		1
4	92196A537	1/4-20 x 1/2" LG. SHCS	18-8 Stainless Steel	McMaster Carr	12
5	96278A511	1/4-20 Tooth Washer Nut	18-8 Stainless Steel	McMaster Carr	3



TOLERANCE & MACHINE NOTES UNLESS OTHERWISE SPECIFIED		NAME	DATE
DIMENSIONS ARE IN INCHES @ 68-72 °		TM	12/26/12
TOLERANCES:		CHECKED	
TWO PLACE DECIMAL	±.010	ENG APPR	
THREE PLACE DECIMAL	±.005	MFG APPR	
FOUR PLACE DECIMAL	±.0005	COMMENTS	
MAXIMUM MACHINED SURFACE	125µ		
ANGULAR: ±.5°			
CHAMFER ALL EDGES: .03 x 45°			
FILLET RADIUS: .015			
MATERIAL			
HEAT TREATMENT			
FINISH			
DO NOT SCALE DRAWING			

PTI Plasma Technics Inc.

TITLE: Dual Cell Plasma Block 3 Up Reactor Assembly

SIZE: D DWG. NO: 79101 REV: 0

SCALE: 1:2 WEIGHT: SHEET 1 OF 1

REV.	CHANGES	DATE	ENG.
0	INITIAL RELEASE	12/26/2012	TM